



The Abbey is Canberra's most unique venue, located only fifteen minutes from the CBD. The venue has a rich and fascinating history centred around the breathtaking Roslyn Organ – Australia's largest privately owned wood carving. A long record of shows and events is only further proof of its adaptability to transform for any style to best suit your needs.

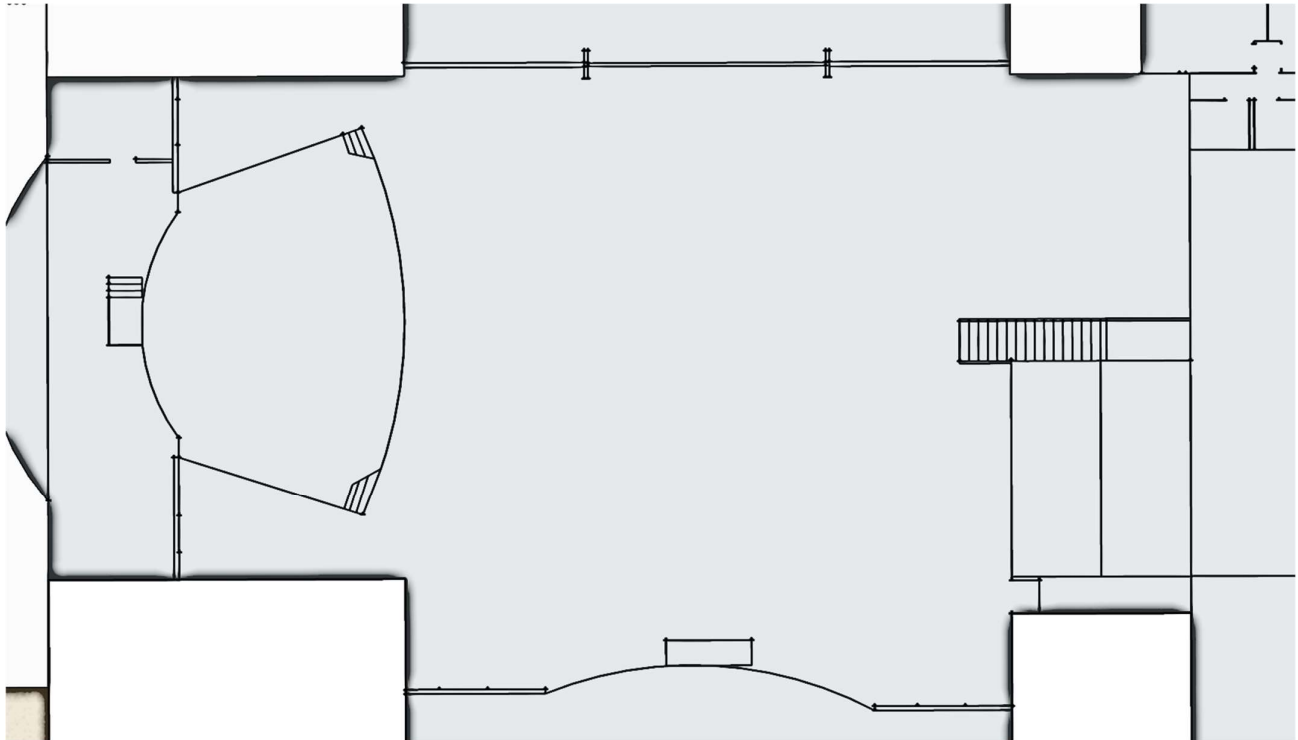
The Abbey is managed by Copper Live Aust, a company specialising in bringing high quality performances to Canberra with an understanding of what artists require to ensure a successful event.

Some of the artists and performers who have graced our stage

19 Twenty	Aj Barker	Russell Morris
Phil Morris	Akmal Salei	The Cockroaches
Boom Crash Opera	Lucy Sugerman	Drawing North
Kim Churchill	Dragon	Choir Boys
Diesel	Ian Moss	Pete Murray
Vika and Lynda	Kattie Noonan	The Beards
Sarah McCleod	Julia Stone	The Black Sorrows
	Pseudo Echo	



The Venue



Room Capacity

Seated Cabaret Style	220
Seated Theatre Style	350
Standing	400

The Abbey Technical Specifications

Stage

15.7m x 10.5m
750mm high
Back drop is carved oak shell

FOH console and PA

Soundcraft Si Performer 3
EAW 730 System
4 x 730 cabinets per side
(flown)
1 x SB730 per side (flown)
3 x Dual 18" Subs centre
stacked

Monitors

8 x JBL STX812 Monitors
Drum Fill
1 x QSC KW152
2 x QSC KW181 Subwoofer

Lighting - Front Truss

6 x Moving Head LED Wash
4 x Chauvet Core 3 x 3
2 x Martin Mac700 Profile

Power

1 x 20a Three Phase side of
stage
2 x 32a Three phase rear of
building 47m
1 x Stage Power separate
circuits

Venue Facilities

Parking

The Abbey has 150 car spaces designated for patron parking.
Parking for artists and crew can be organised on request.

Greenroom

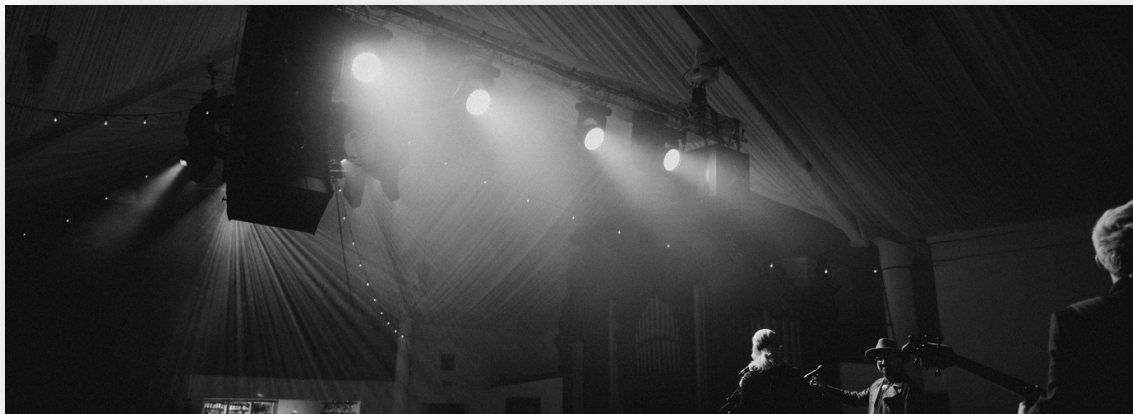
The Greenroom is directly behind the stage and offers an abundance of room.
As well as the greenroom is exclusive access to the courtyard garden. The greenroom
can come with private bar and artist liaison.

Hospitality & Tech Riders

The Abbey has the ability to fill all hospitality & Technical Riders on request.

Load in

Load in is from the front of the building after 4pm. From the front doors to stage is
15m. Early access load in available on request and at discretion of management.



What you get with The Abbey

- ◇ Complete access to the entire venue 4pm-11pm (Early access available on request)
 - ◇ Standard in house production package with technician
 - ◇ Security
 - ◇ Artist Liaison with basic hospitality rider
 - ◇ In house Ticketing platform
 - ◇ Venue partners support
 - ◇ Live stream services*
 - ◇ Constant Marketing support

Extras we can happily help with

- ◇ Additional production requirements and staff
- ◇ Comprehensive or additional hospitality riders (on receipt)
 - ◇ Accommodation
 - ◇ Multi Track Recording

